



Installation Manual

Orbital Tap (OM8811-E & OT8911-E)

5-06-0036

Publication date 2025-07-10

Copyright © 2025,Orbital Systems


All rights reserved. No part of this document may be reproduced or copied in any form or by any means without written permission from Orbital Systems. The English language version of this document contains the original instructions. All other language versions are translations of the original instructions.

Table of Contents

| | |
|---|----|
| Thank you for your purchase | 4 |
| Service | 4 |
| System overview | 5 |
| Technical specification | 6 |
| Installation requirements | 7 |
| Wall installation | 8 |
| Seal mountings in wet zone | 8 |
| Component overview | 9 |
| Product measurements | 10 |
| Recommended installation measurements | 11 |
| Installation | 13 |
| Prepare bathroom | 13 |
| Install the bottom valve outlet | 14 |
| Install Tank | 15 |
| Install Pump | 17 |
| Install Mixer | 18 |
| Mount the faucet | 20 |
| Connect water and drain | 24 |
| Connect cables | 25 |
| Prerequisites and Approvals | 26 |
| EU Declaration of Conformity | 27 |

Thank you for your purchase

This manual applies to model OM8811-E & OT8911-E

 Read the Safety Guide before starting the installation or before operating the product.

Thank you for purchasing the Orbital Tap from Orbital Systems. To enjoy the product's full potential, please read and follow the procedures in this manual. Make sure that you fully understand how to operate Orbital Tap and make sure that it is properly maintained in accordance with the instructions given in this manual and the User Guide. Do not discard this manual, keep it handy for future reference.

Service

Orbital Systems and our team of expert staff are available to assist you if you require product advice, experience any problems, need to purchase spare parts or to set up a service appointment.

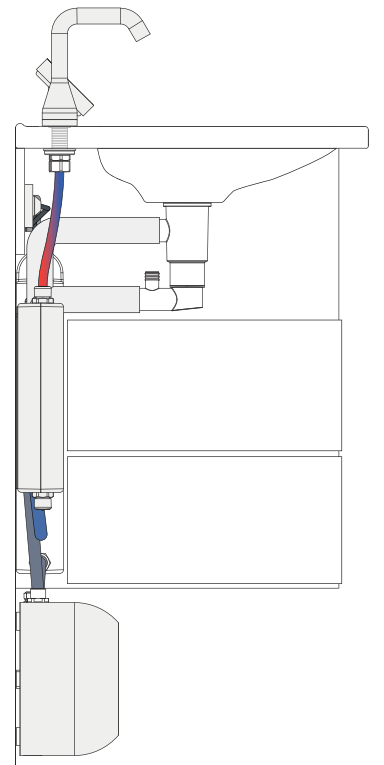
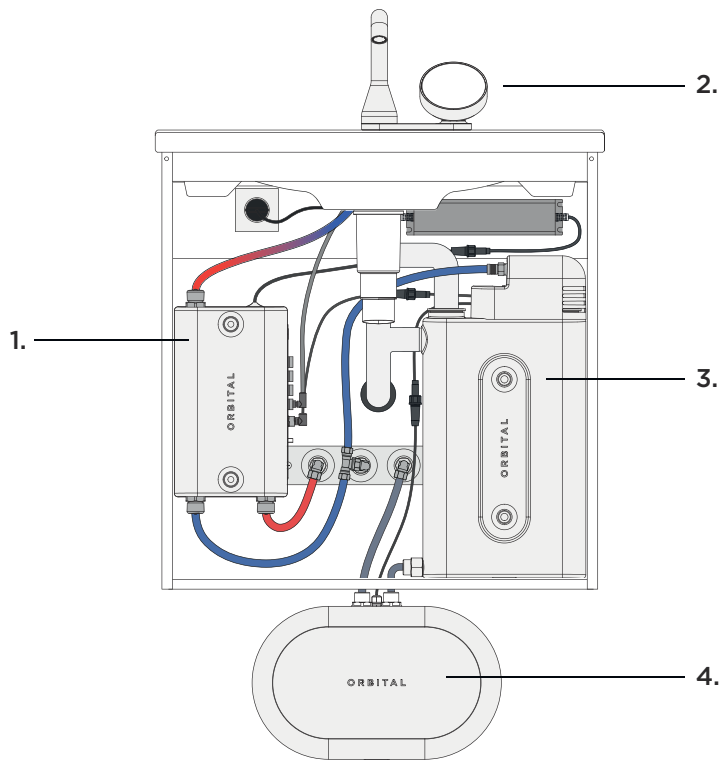
Repairs should only be carried out by Orbital Systems.

If the supply cord is damaged, it must be replaced by Orbital Systems to avoid a hazard.

Contact us

- support@orbital-systems.com
- www.orbital-systems.com

System overview



1. Mixer
2. Faucet with Control Dial
3. Tank
4. Pump

Technical specification

General performance

| | |
|--------------------|--|
| Savings rate: | Up to 100% water savings of water used in the sink |
| Water flow: | Up to 7 l/min |
| Temperature range: | Typically 4-55°C, depending on local water supply |

Size and weight

| | |
|---------------------|----------------------------|
| Faucet: | 162 x 169 x 155 mm, 1.5 kg |
| Mixer: | 310 x 190 x 65 mm, 2.1 kg |
| Tank: | 440 x 270 x 65 mm, 1.2 kg |
| Pump: | 230 x 344 x 136 mm, 6.1 kg |
| AC/DC power supply: | 48 x 210 x 20 mm, 420 g |

Water supply

The water supply determines the available flow and temperature from the faucet

| | |
|---------------------------------------|---|
| Incoming water: | Recommended flow: 5-8 l/min Recommended incoming water pressure: 2-5 bar Maximum working pressure: PN10 Hot water temperature (min-max): 50-65°C Cold water temperature (min-max): 4-25°C |
| Water connections (Mixer and Faucet): | G 1/2 threads (ISO 228/1-G 1/2" external threads) |
| Water connections (Tank and Pump): | G 1/2" threads (ISO 228/1-G 1/2" external threads) and G 3/8" threads (ISO 228/1-G 3/8" external threads) |
| Water hardness: | 3°dH-14°dH. If the incoming water is more than 14dH it is recommended to install a water softener. |

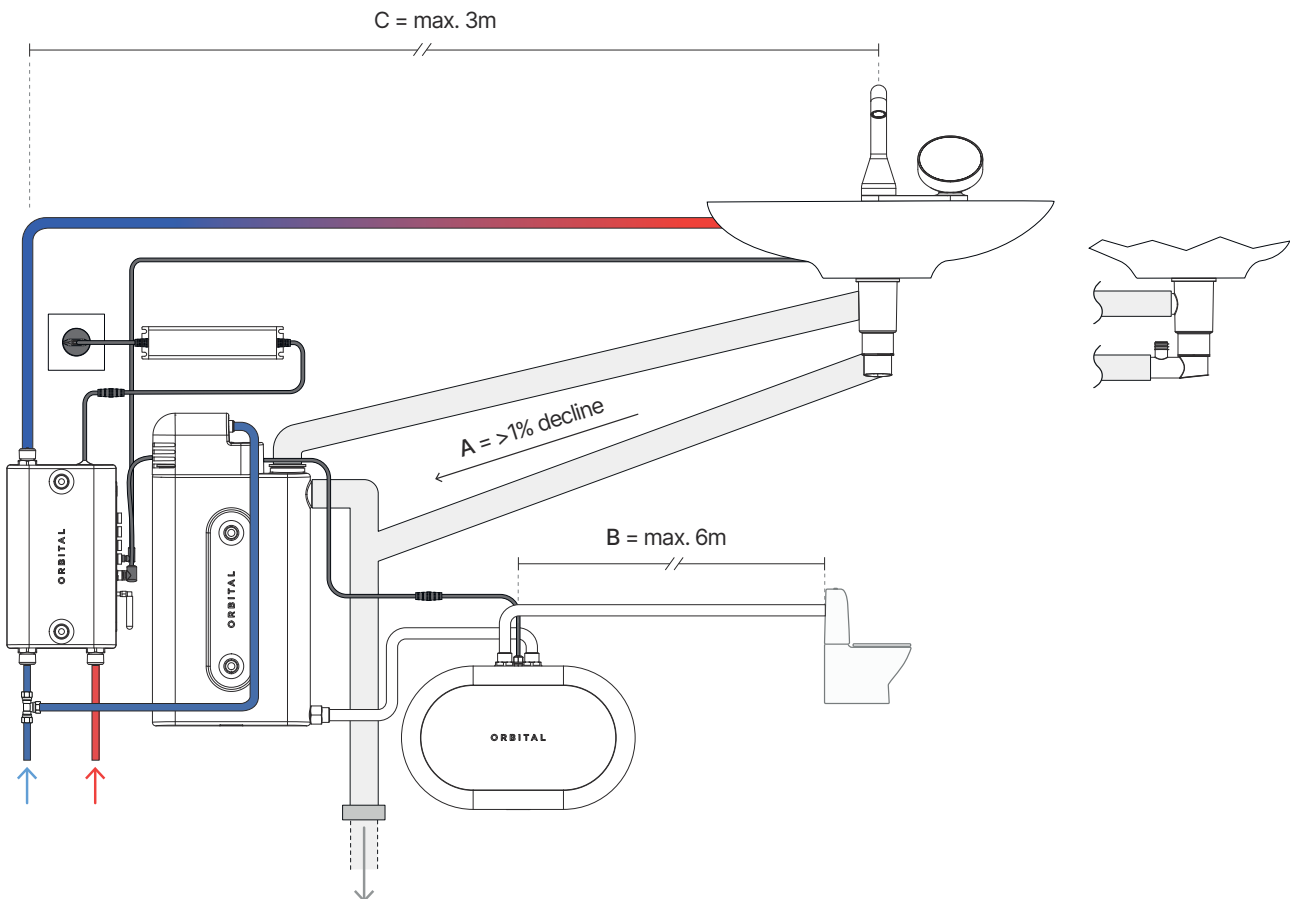
Power supply

| | |
|-------------------------------|--|
| 100-240V, 50/60Hz, 2.5A, 120W | Power consumption: Mixer unit; active mode: nominal 5W, max. 20W; standby mode: 1.8W Tank and Pump unit; active mode: nominal 25W, max. 70W; standby mode: 0.21W |
|-------------------------------|--|

Connectivity

| | |
|----------------------|--|
| Internet connection: | Password protected 2.4 GHz Wi-Fi network or Ethernet |
|----------------------|--|

Installation requirements



- A.** The bottom valve outlet must be placed higher than the inlet on the Tank (minimum 1% decline).
- B.** The Pump needs to be placed within 6 m from the toilet cistern. The cable between the Pump and the Tank is 1 m (extension cords available on request). The Pump must not be placed higher than the Tank.
- C.** The faucet and Mixer can be placed at a maximum distance of 3 meters. For optimal performance, it is recommended to install the Mixer directly below the sink. Increased distance will delay temperature changes.

Wall installation

The total weight of all components is approximately 12 kg when the Tank is filled with water. The surrounding structure must be able to support the forces that will stress the attachment points.

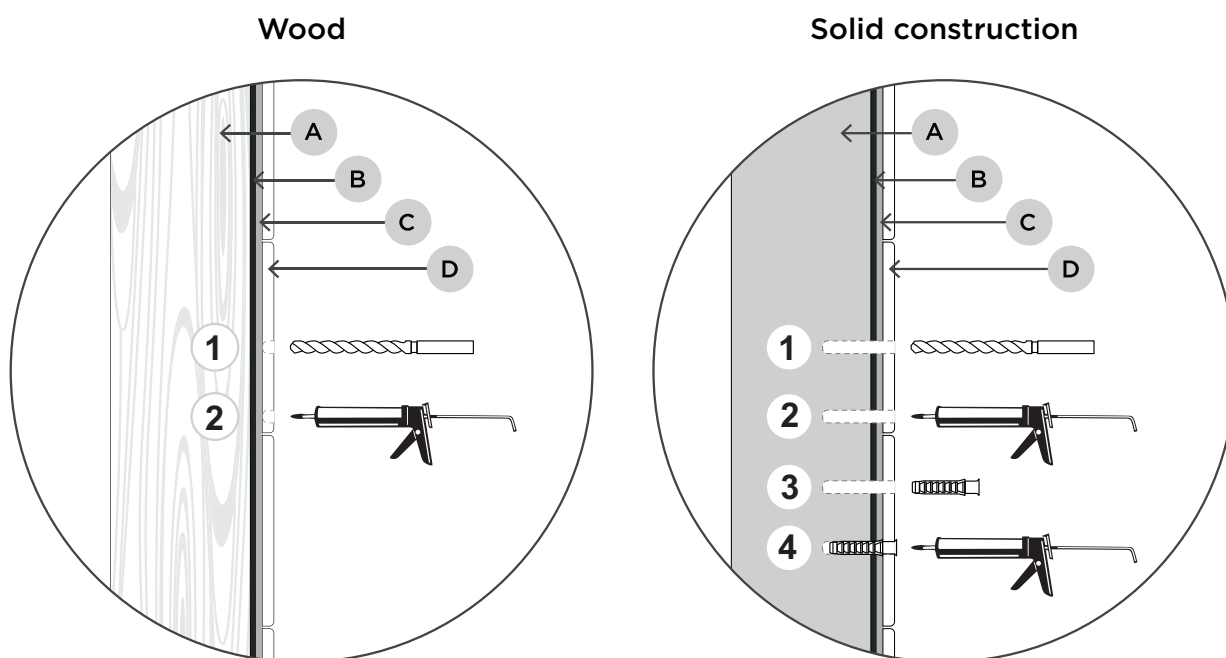
Seal mountings in wet zone

Seal the drill holes in accordance with applicable industry standards.



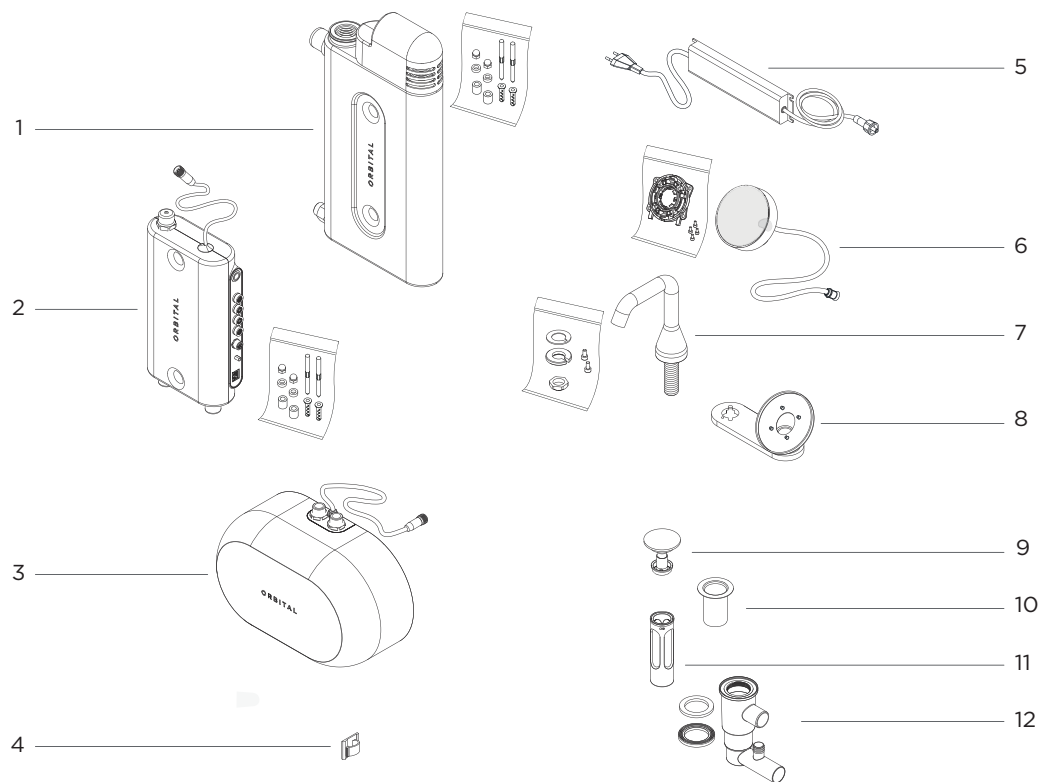
CAUTION

Installations in Sweden must be carried out in accordance with the current Industry Rules Safe Water Installation. All mountings in the wet zone must be sealed against the waterproofing layer of the wall or floor. Material for sealing must adhere to the substrate and be water-resistant, mold-resistant and aging-resistant.



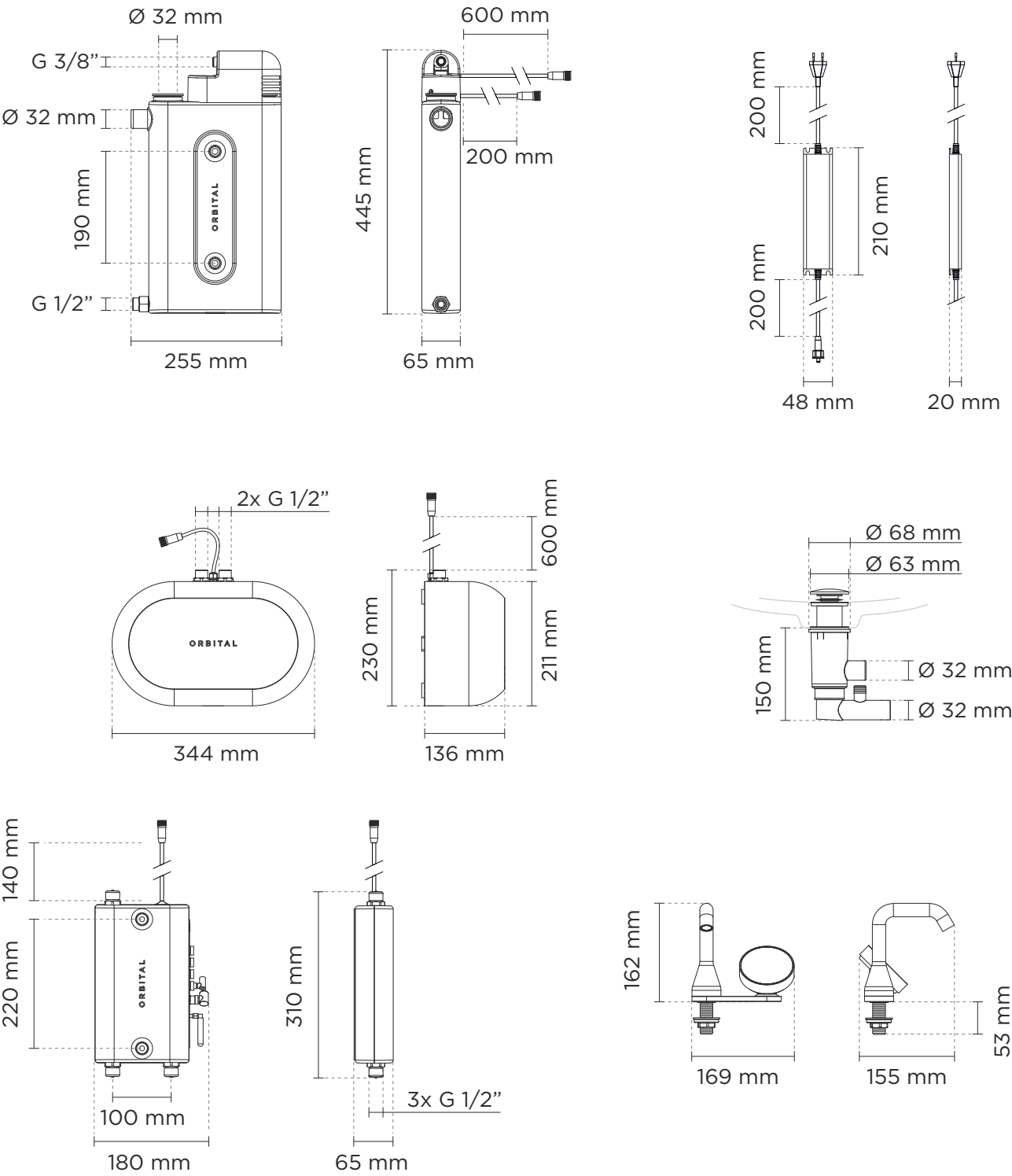
- **A:** Wood / Concrete
- **B:** Waterproofing membrane
- **C:** Tile adhesive
- **D:** Tile

Component overview

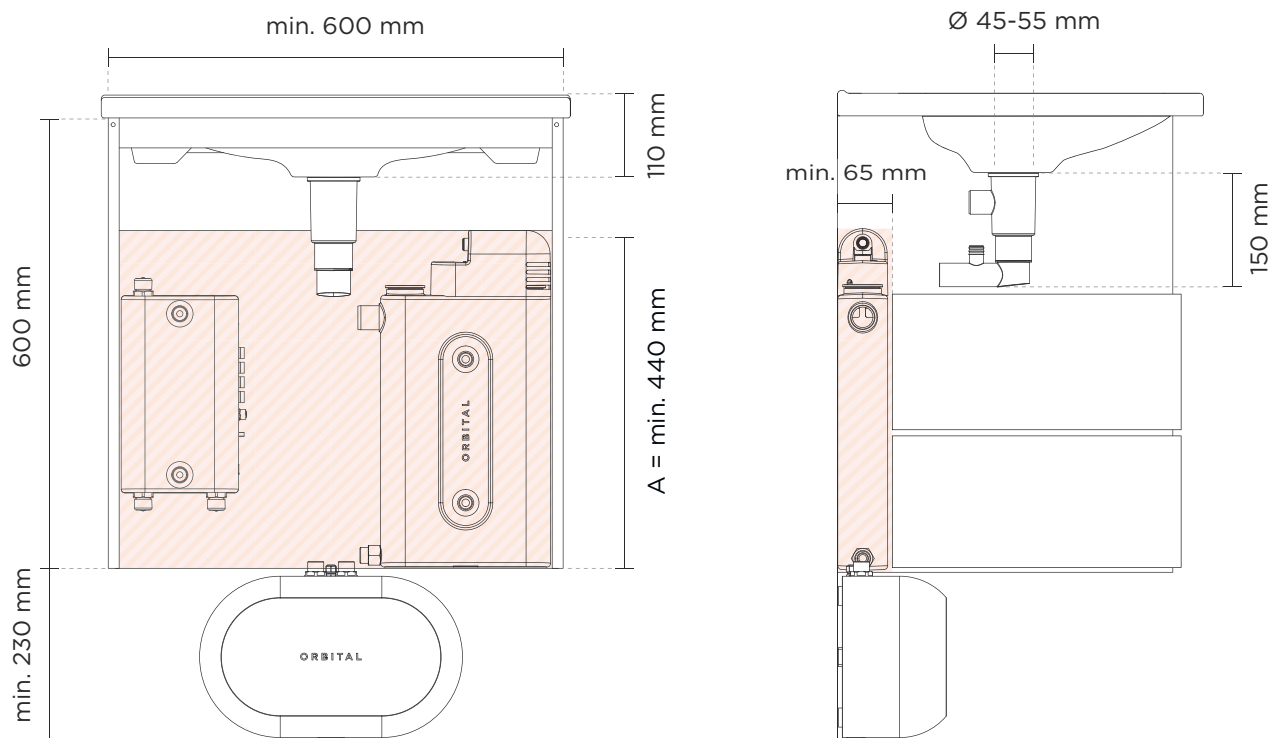


1. Tank with fastening kit
2. Mixer with fastening kit
3. Pump
4. Cable organizer, x2
5. AC/DC power adapter
6. Control Dial
7. Faucet
8. Control Dial holder with bracket and screws, x4
9. Bottom valve
10. Bottom valve flange
11. Fresh Mesh
12. Bottom valve outlet

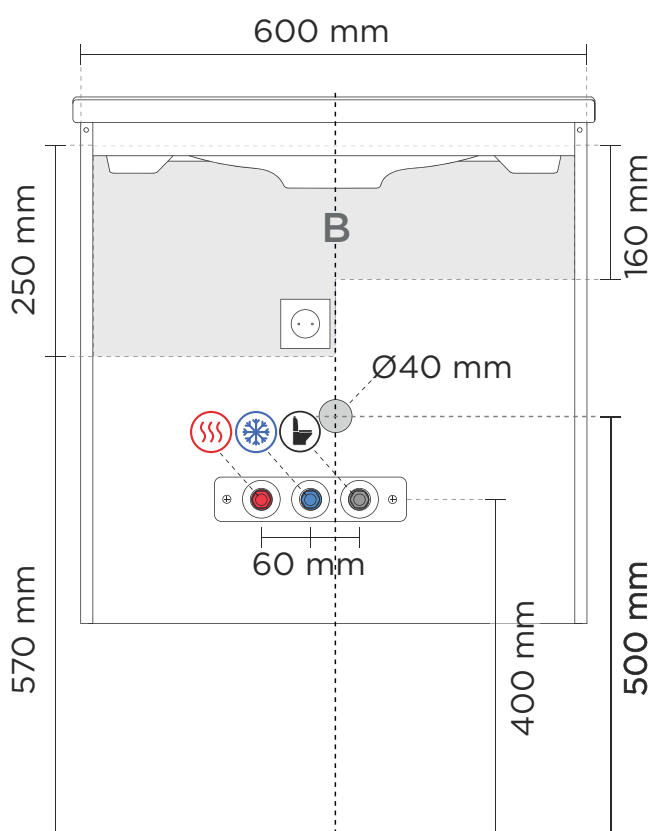
Product measurements



Recommended installation measurements



A = Area with open surface for mounting the wall mounted components.



B = Area where the electrical outlet can be placed.

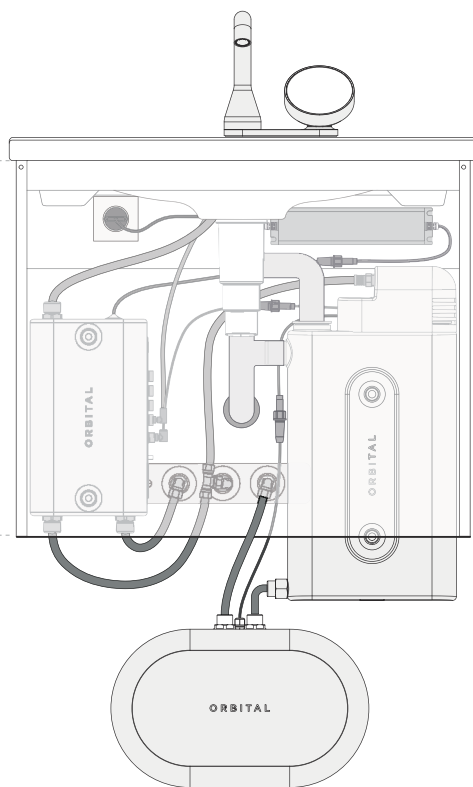


NOTE

The recommended commode height of 600 mm is only applicable for complete coverage of the components. You can use a commode with a lower height without affecting the product's functionality.



<600 mm

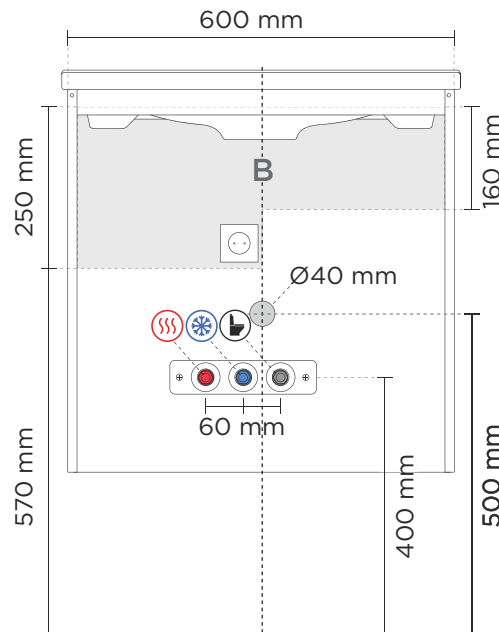


Installation

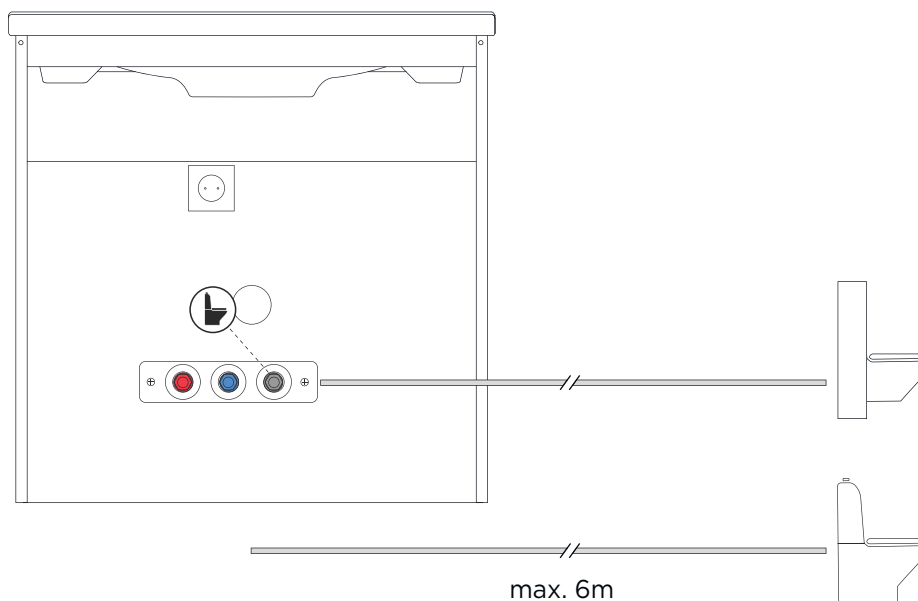
In the scenario displayed in this manual, the commode is 600 mm wide.

Prepare bathroom

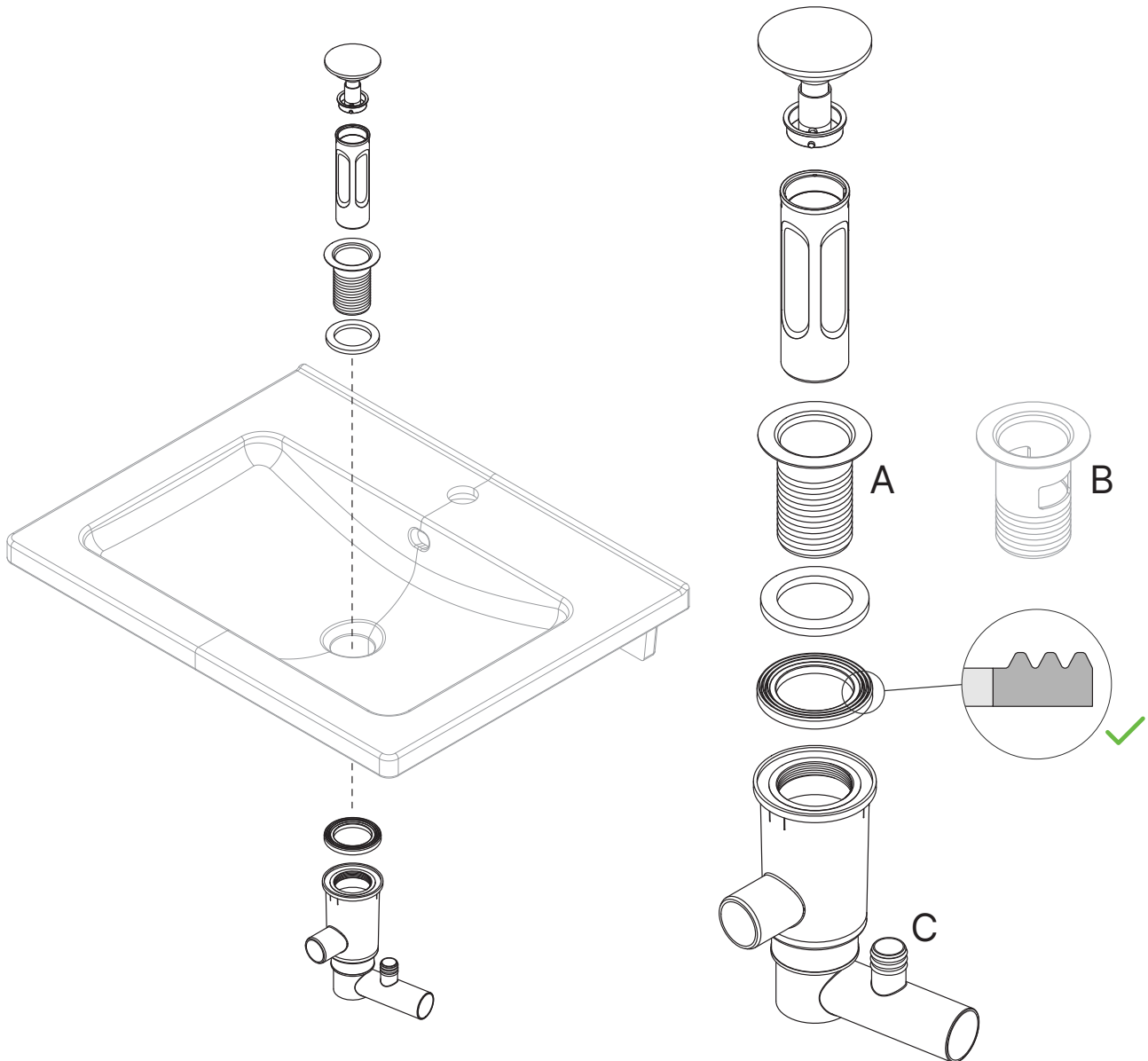
1. Prepare the installation area for incoming hot and cold water, drain, and electricity.
B = Area where the electrical outlet can be placed.



2. Install the connection to the toilet cistern. Adapt the piping according to the installation scenario. The distance between the Pump and the toilet cistern can be a maximum of 6 meters.



Install the bottom valve outlet



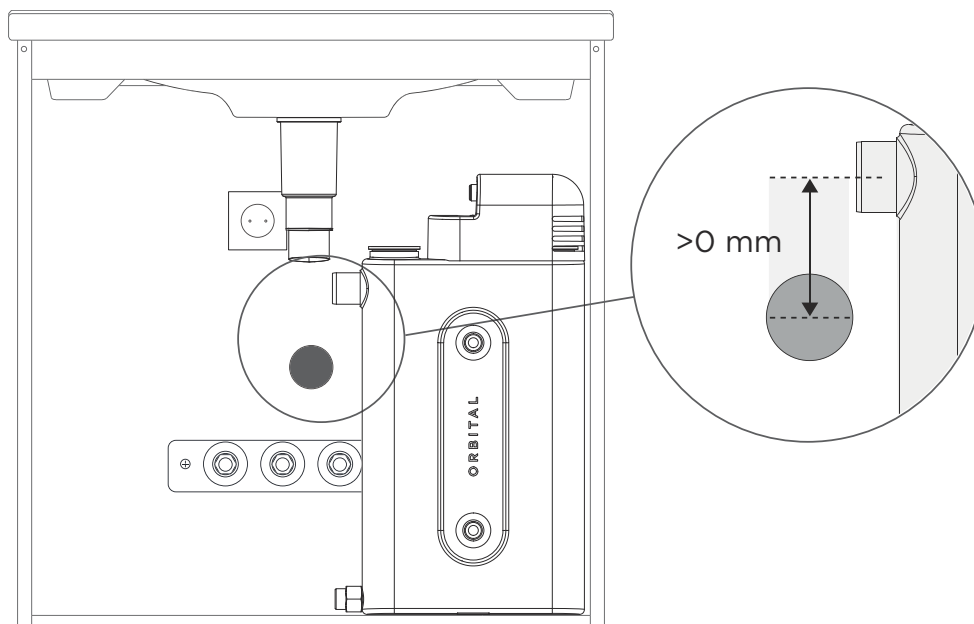
A. Recommended option. For washbasin without integrated overflow.

B. For washbasin with integrated overflow.

C. Punch-out for potential overflow connection.

Install Tank

1. Before drilling, make sure the components fit and that the overflow outlet on the Tank is located at a higher point than the drain.

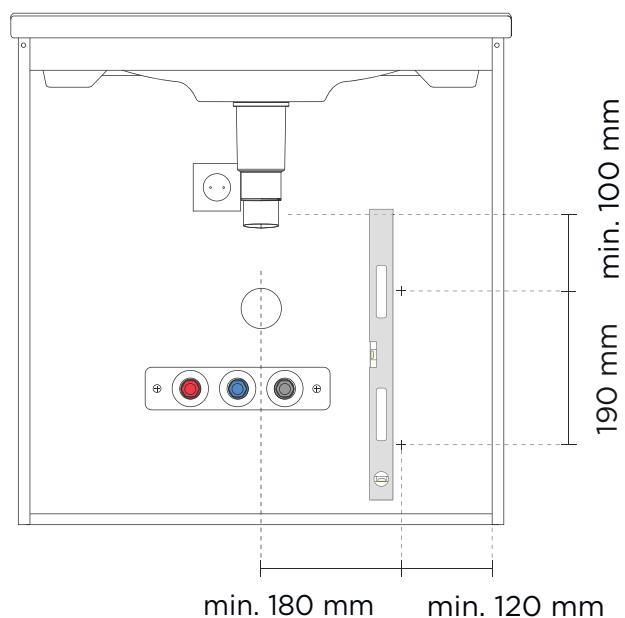


2. Pre-drill holes for the Tank fastening kit.

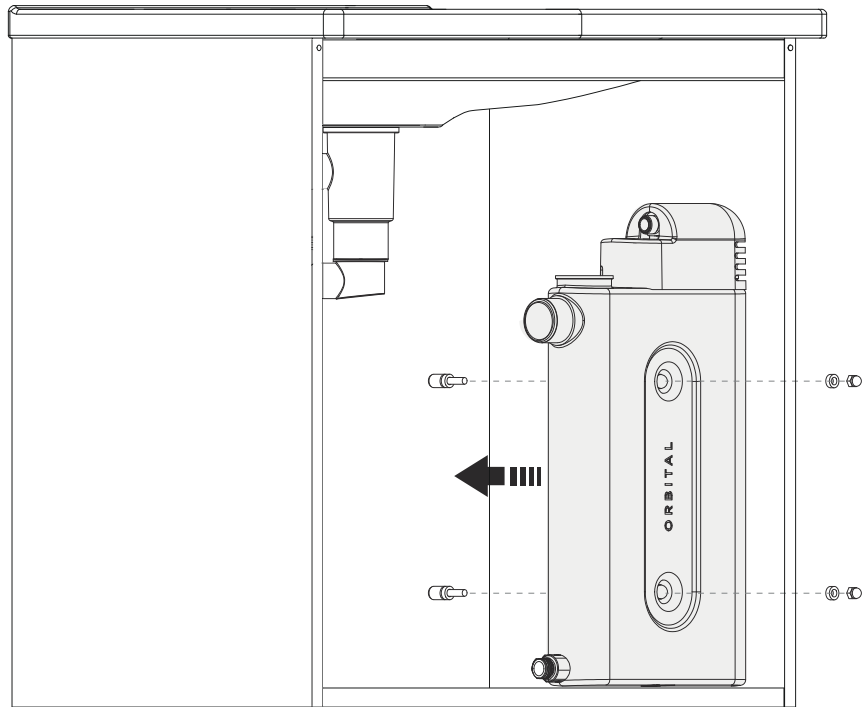


CAUTION

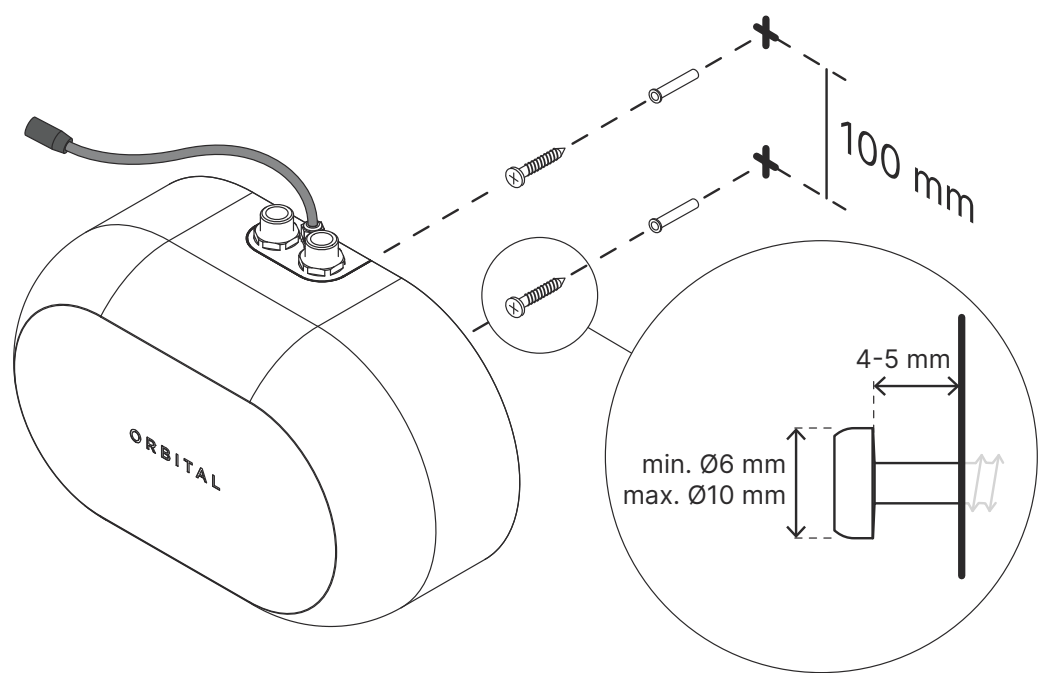
Make sure the two holes are vertically aligned to ensure the Tank is not tilting.



3. To avoid damaging the Tank unit, make sure not to over tighten the screws.

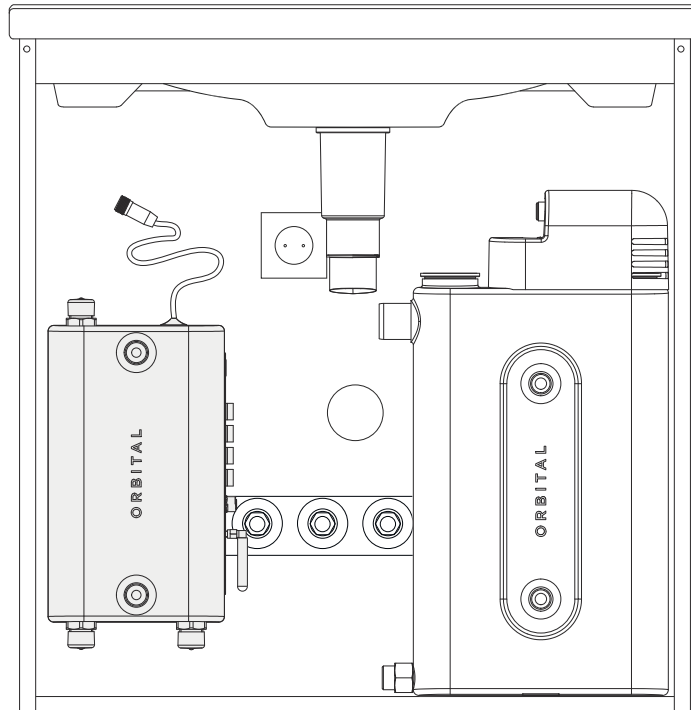


Install Pump

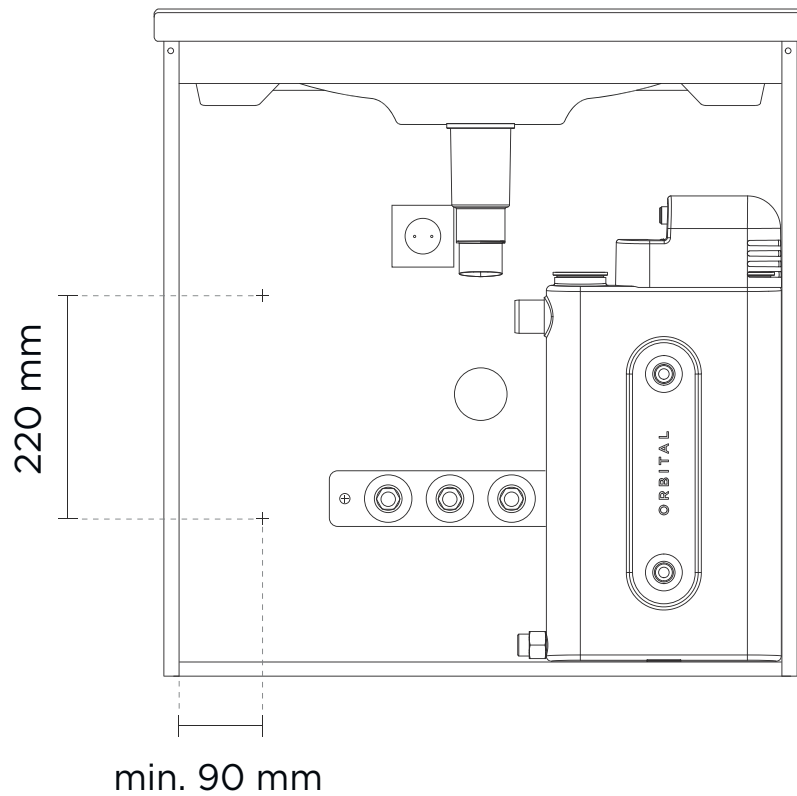


Install Mixer

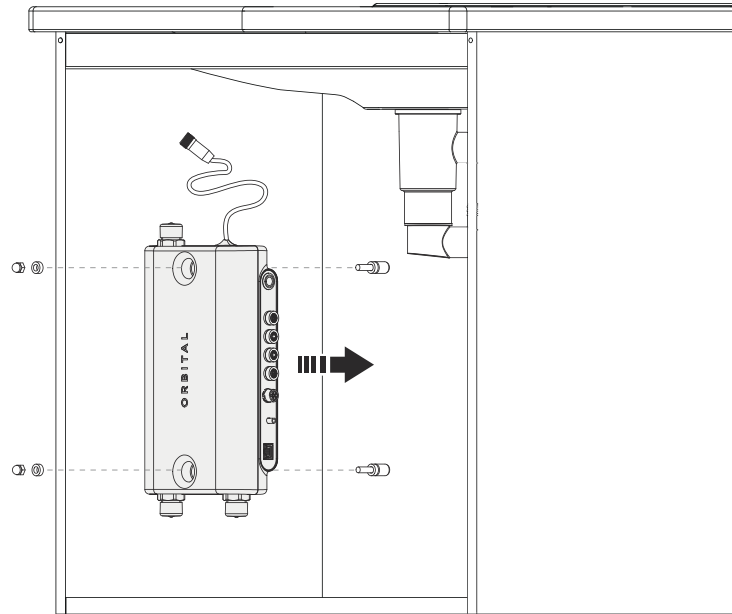
1. Before drilling, make sure the components fit.



2. Measure the position of the Mixer fastening kit. Proceed by pre-drilling the holes.

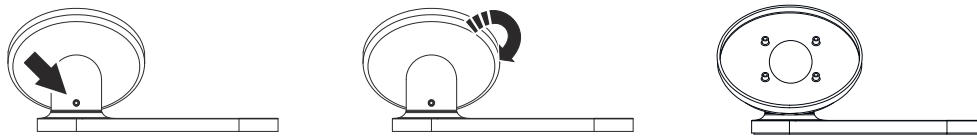


-
- 3.** Attach the Mixer. Add the thin washers, and secure with the nuts.

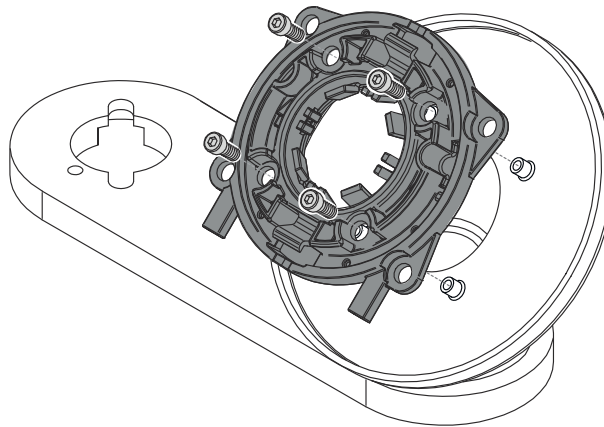


Mount the faucet

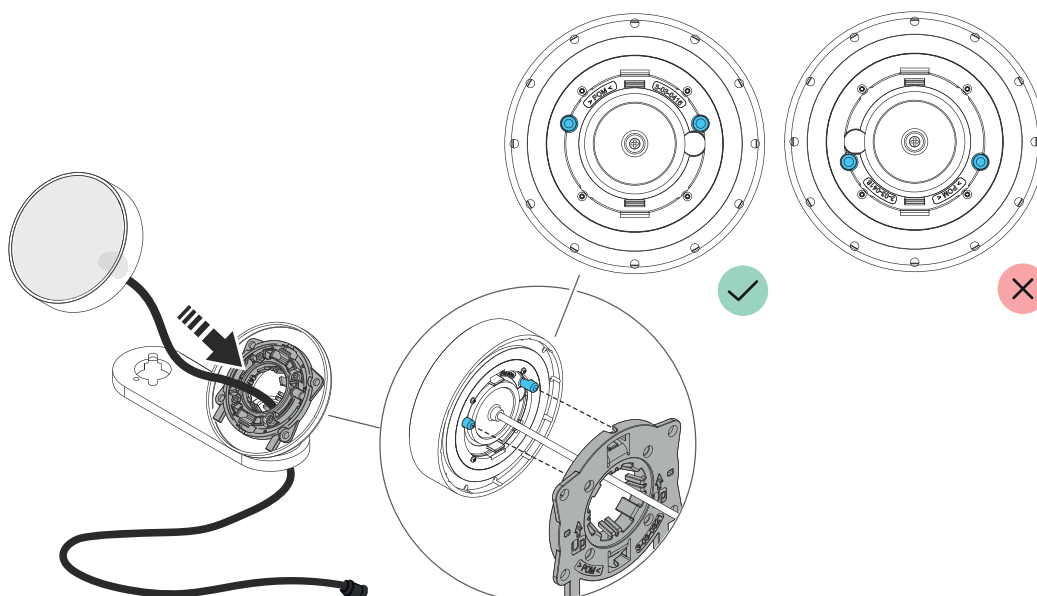
The faucet is delivered right oriented. To make it left oriented you can rotate the Control Dial bracket by loosening the screw in the back. Tighten the screw again when the bracket is set in the correct position.



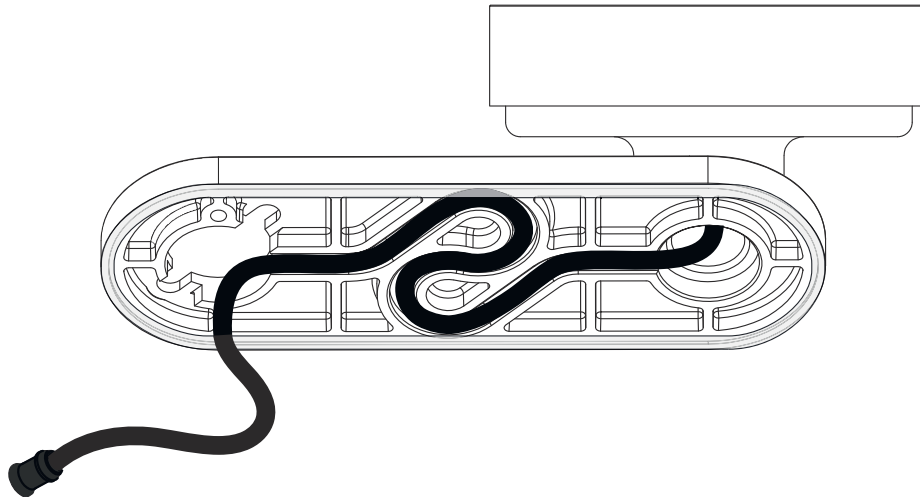
1. Mount the Control Dial bracket to the holder using the four screws.



2. Mount the Control Dial on the bracket. Position the Control Dial according to the “up marking” before assembly.



-
3. Fit the cable in the channel on the bottom of the base plate.

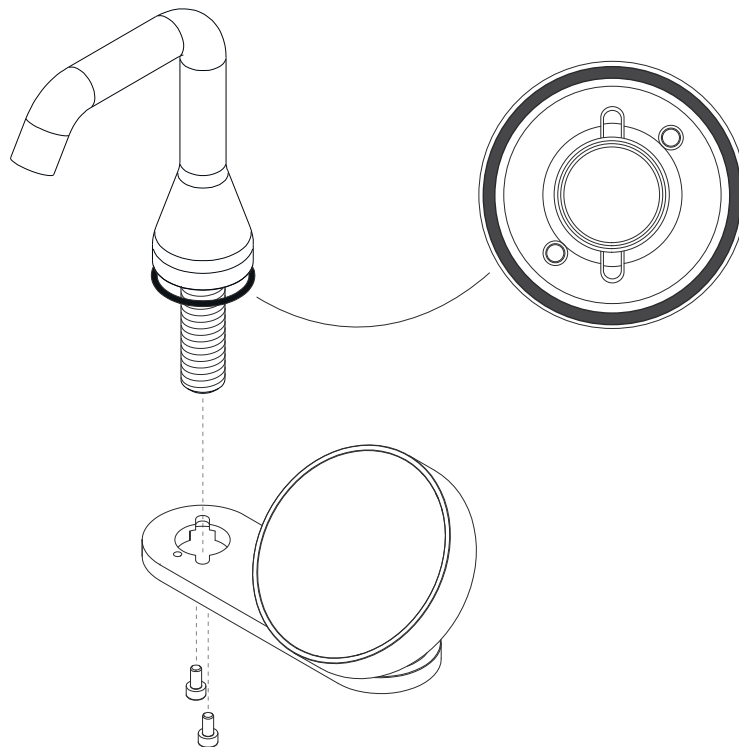


-
4. Mount the faucet to the base plate.

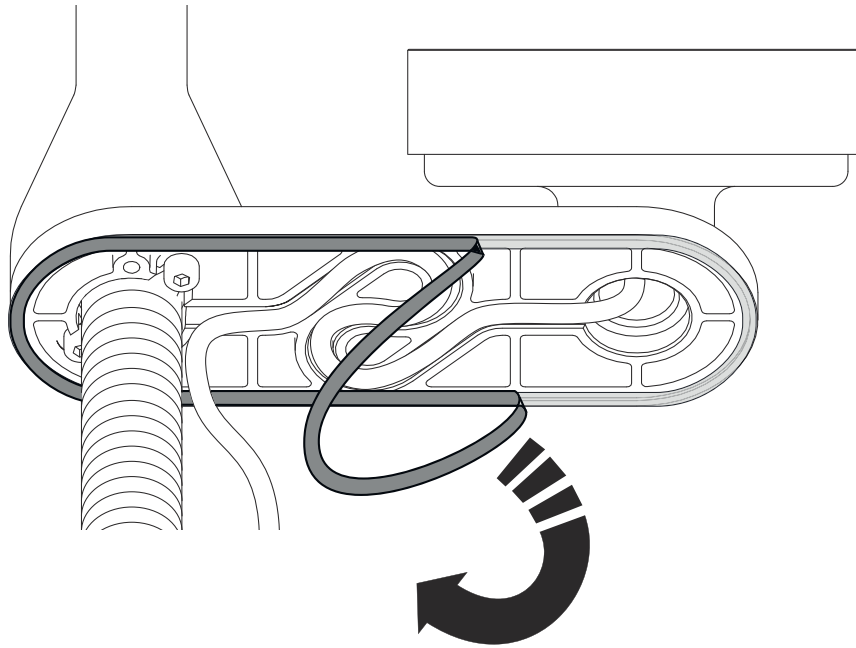


CAUTION

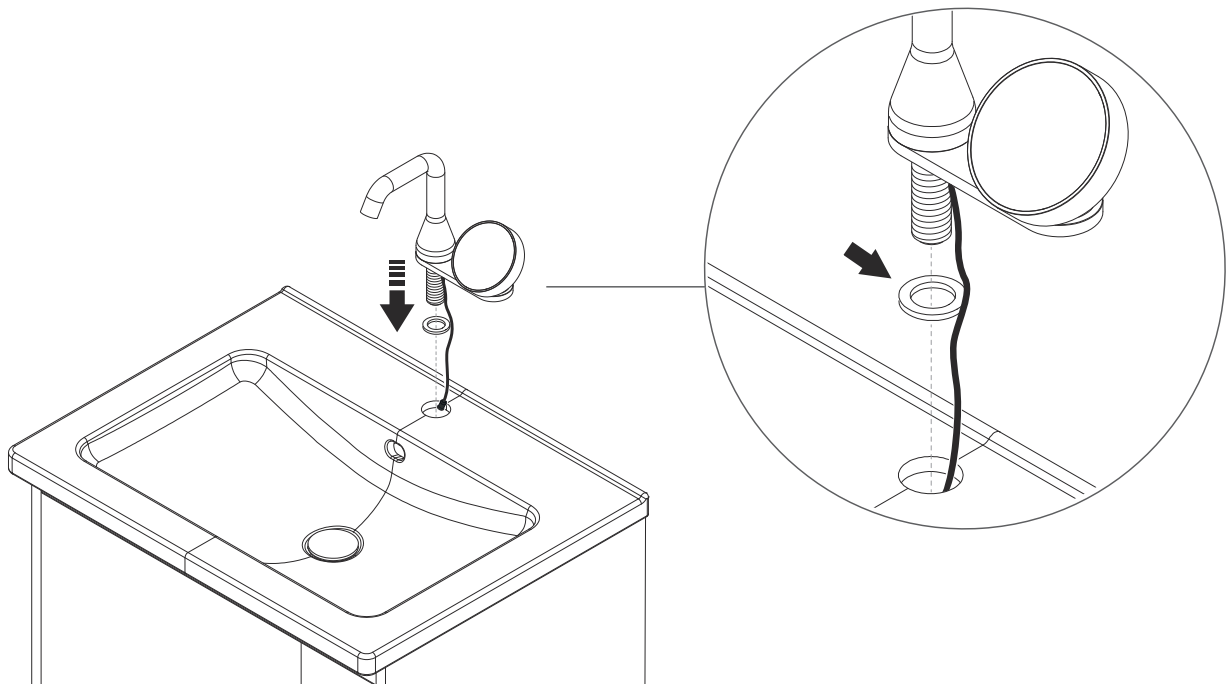
Make sure the o-ring in the bottom of the faucet is in place.



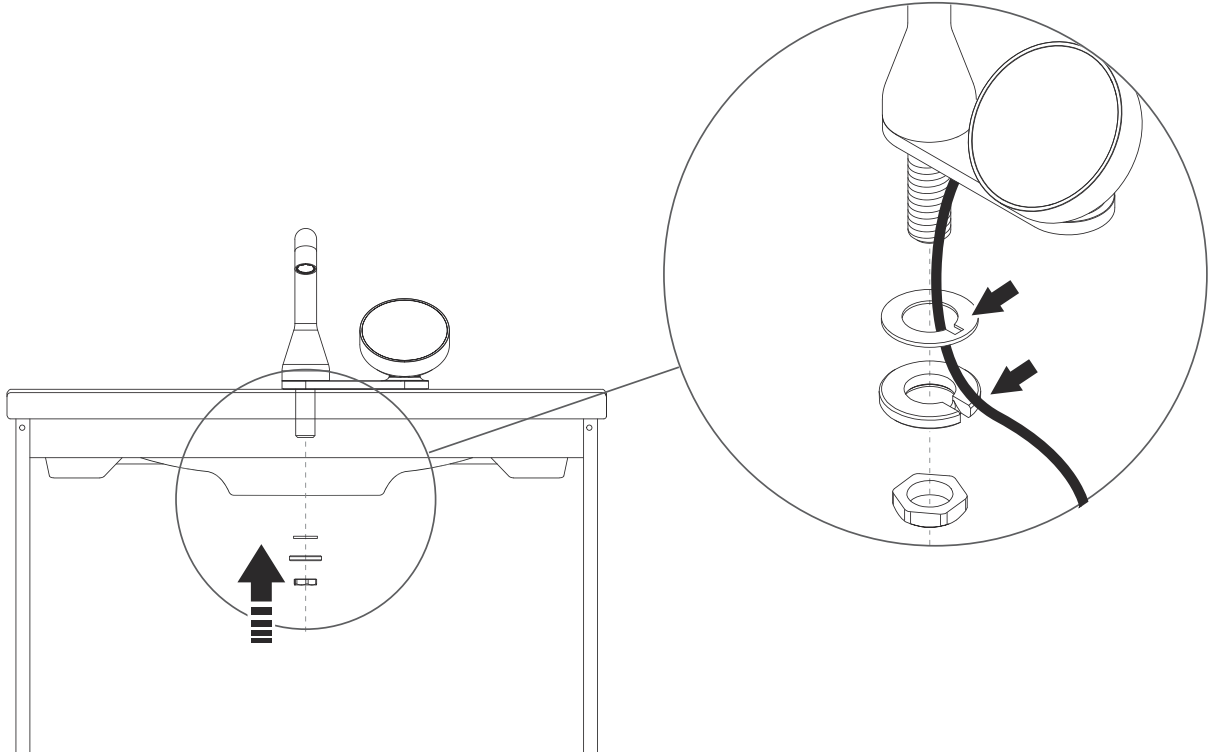
-
5. Remove the plastic cover from the adhesive strip at the bottom of the base plate.



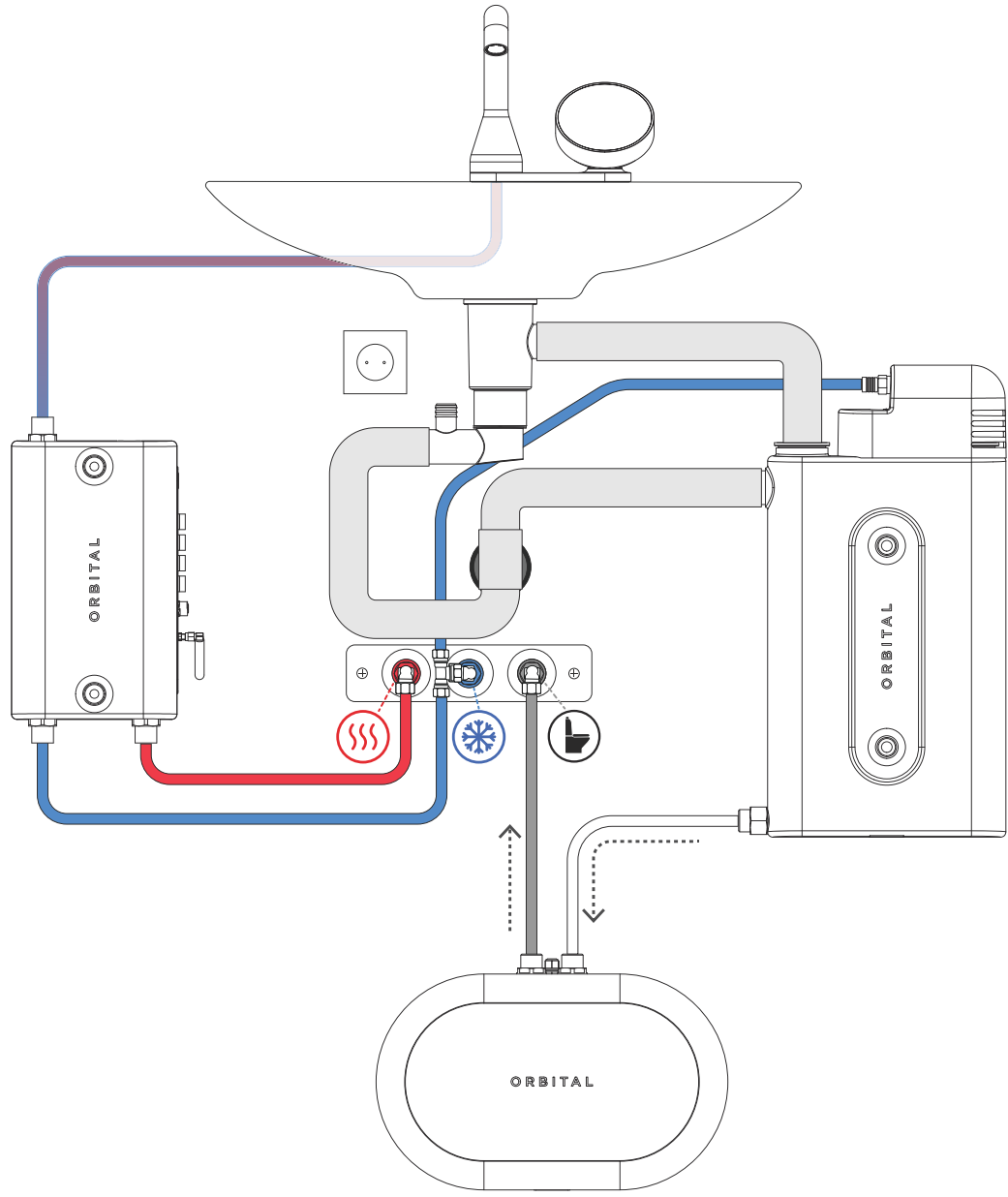
-
6. Place the gasket between the faucet and the wash basin, before threading the faucet and cable through the opening.



-
7. Mount the faucet. Use a tubular socket wrench for better access.



Connect water and drain



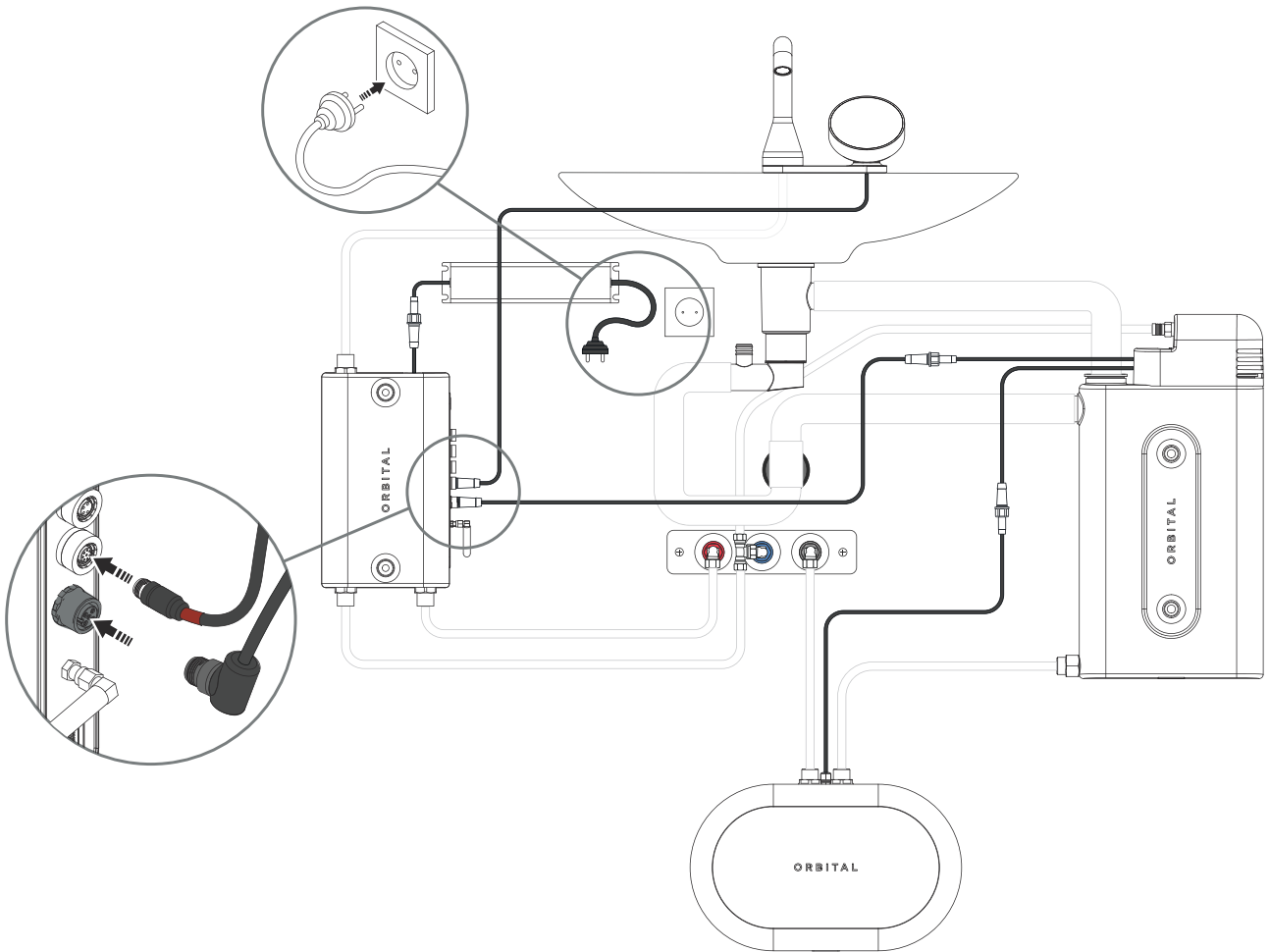
Connect cables

NOTE

When the system is connected to power, the Tank will automatically fill to make sure there is water to flush with even if the faucet has not been used.

! IMPORTANT

Flush the toilet twice to ensure the Pump starts and the toilet cistern is being refilled. Check for leaks to ensure watertightness.



Prerequisites and Approvals

Orbital Tap is designed according to the Swedish requirements in Swedish National Board of Housing and Building & Planning regulations (BBR).



Orbital Tap is CE-marked based on certificate and test reports from third party labs.

If industry regulations and instructions in this manual are followed, Orbital Systems guarantees a functional system.

EU Declaration of Conformity

We Orbital Systems AB,
 Östergatan 32
 211 22 Malmö
 Sweden

Hereby declare that this DoC is issued under our sole responsibility and belongs to the following product:
OM8811-E & OT8911-E

This declaration is in conformity with the relevant union harmonized legislations:

RED 2014/53/EU RoHS 2015/863 LVD 2014/35/EU

The following harmonized standards and technical specifications have been applied:

| | | |
|---------------------------------------|-----------------------|---------------------------|
| EN 300 328 V2.2.2 | EN IEC 61000-6-1:2019 | EN IEC 61000-6-4:2019 |
| EN 60335-1:2012;A11;A13;A1;A14;A2;A15 | EN IEC 61000-6-2:2019 | ETSI EN 301 489-1 V2.2.3 |
| EN 62233:2008 | EN IEC 61000-6-3:2021 | ETSI EN 301 489-17 V3.2.4 |

Signed for and on behalf of Orbital Systems AB



| Place | Date | Name | Position |
|-------|------------|-------------------|----------|
| Malmö | 2024-04-08 | Mehرداد Mahdjoubi | CEO |

The manufacture of this product has been made in accordance with the Type-approved decision on production control and the documents submitted to the decision of issue of this certificate.

ORBITAL



CERTIFIED SPACE TECHNOLOGY